

SUPPLY CHAIN & LOGISTICS ADVISORY

CONNECTING SUPPLY CHAIN & REAL ESTATE STRATEGIES

Cushman & Wakefield's Supply Chain & Logistics Advisory team helps determine the unique network configuration that makes your business profitable, sustainable and reliable while getting product to your customers quickly and efficiently.

Working with logistics and industrial occupiers around the world means we've become experts at just about every part of the supply chain. Alongside our real estate prowess, what makes us adept at supply chain solutions is that we evaluate all factors relating to the supply chain to save you time and money. From real estate and labor to transportation and distribution, we have the data to support custom-made solutions around logistics consulting, supply chain strategy, and facility design services.

80% of the capability and value of a supply chain is determined at the design stage, making Supply Chain Optimization a critical first step in aligning your business infrastructure and real estate assets to meet your needs. Let our team of experts integrate our industrial real estate expertise and strategic supply chain engineering knowledge to ensure your business is flexible, resilient and poised for the future.

CORE SERVICES

- Network Design & Optimization
- Integrated Site Selection
- Labor Market Evaluation
- Risk & Opportunity Assessment
- Inventory Optimization
- Supply Chain Sustainability Modeling
- Cost to Serve & Profitability Analysis
- Transportation Sourcing & Optimization

CONTACTS

Ben Harris

Senior Managing Director,
Client Solutions & Strategy
+1 912 414 2129
ben.harris@cushwake.com

Michael Carson

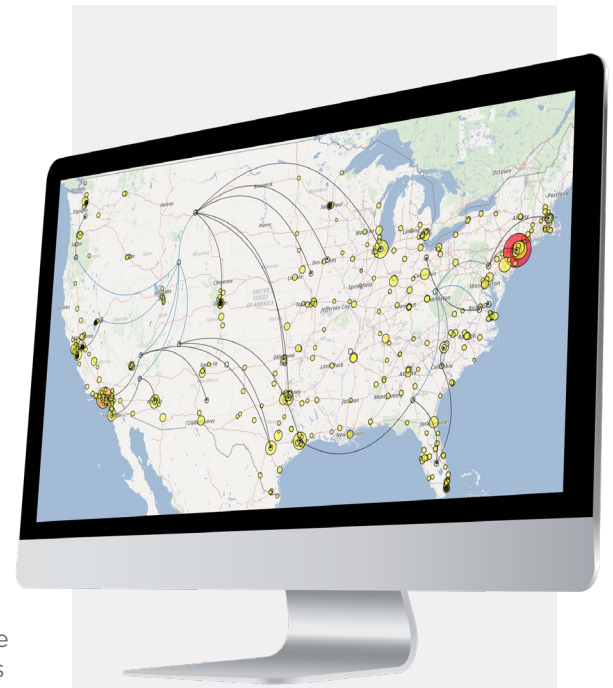
Head of Supply Chain &
Logistics Advisory
+44 782 487 8801
michael.carson@cushwake.com

Tim Foster

Head of Supply Chain &
Logistics Advisory
+6 562 232 0864
tim.foster@cushwake.com

Abraham Joseph

Head of Data & Analytics
+91 799 443 1683
abraham.joseph@cushwake.com



Powerful Data Visualization

Model Scenarios, Expose Risks & Minimize Costs—We leverage sophisticated software to evaluate and optimize millions of supply chain components, including product sourcing costs, inventory carrying costs, and facility costs, to design a supply chain with the lowest total landed logistics and inventory costs.